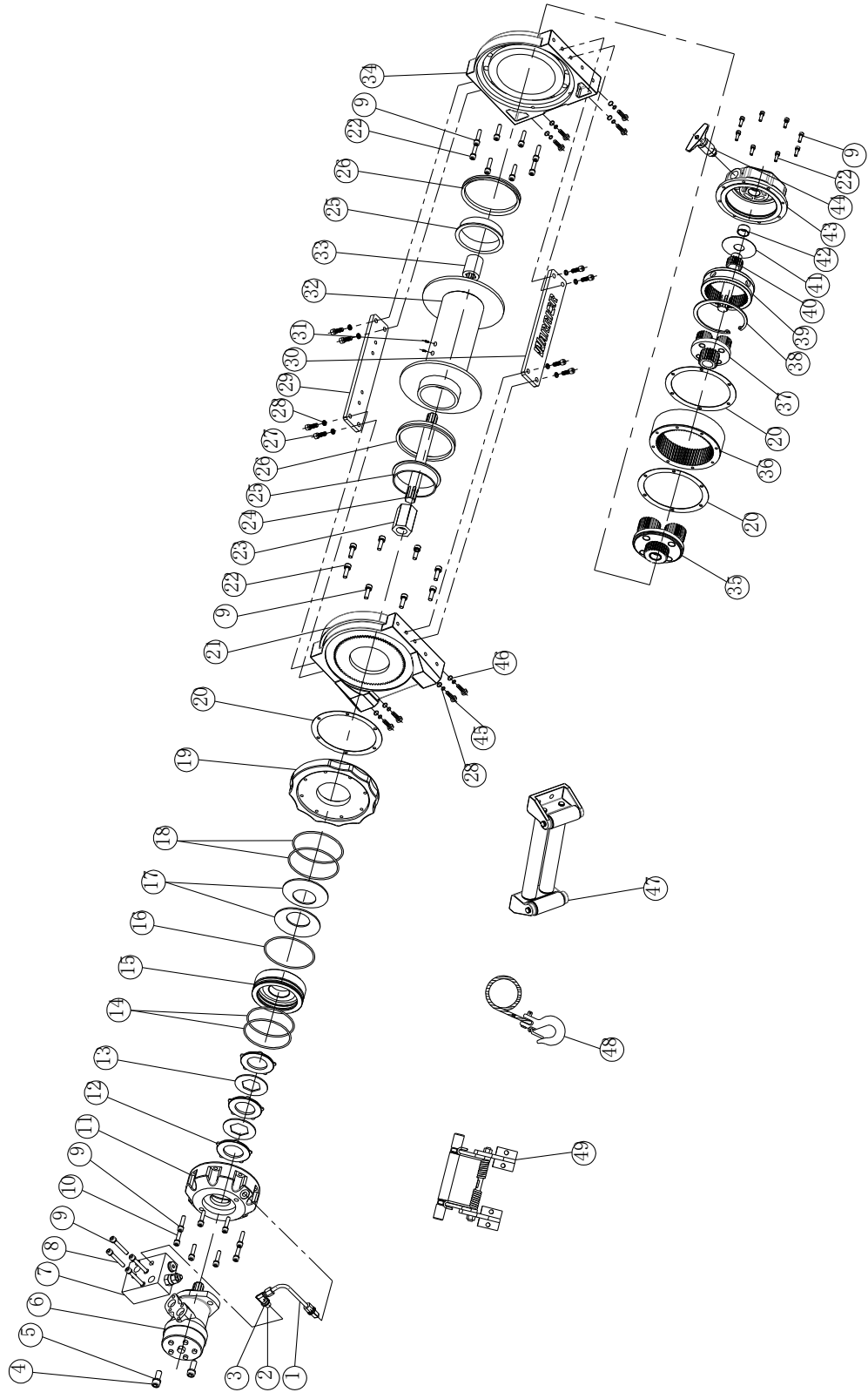




RV 15000 & 18000 Winch Assembly Drawing



WINCH PARTS LIST (15RVSHY/18RVSHY)

No.	Part #	Qty	Description	Remark
1	HV1500001	1	High-pressure oil tube	
2	HV1500002	2	Oil connection Oil	
3	HV1500003	2	Combination Washer 14	
4	HV1500004	2	Cap Screw M12 x 30	
5	HV1500005	2	Lock Washer Φ12	
6	HV1500100-1	1	Hydraulic Motor	Used in 15RVSHY
	HV1500100-2	1	Hydraulic Motor	Used in 18RVSHY
7	HV1500006	1	Blanced valve	
8	HV1500007	4	Cap Screw M8 x 55	
9	HV1500008	36	Lock Washer Φ8	
10	HV1500009	8	Screw M8 x 30	
11	HV1500010	1	Brake stents	
12	HV1500011	3	Brake block	
13	HV1500012	2	Friction plate	
14	HV1500013	2	O-ring seal 100*3.55	
15	HV1500014	1	Piston	
16	HV1500015	1	O-ring seal 140*2.65	
17	HV1500016	2	Disk spring	
18	HV1500017	2	O-ring seal 118*3.55	
19	HV1500018	1	Motor mounting plate	
20	HV1500019	3	Gasket	
21	HV1500020	1	Motor bracket	
22	HV1500021	24	Screw M8 x 25	
23	HV1500022	1	Coupling	
24	HV1500023	1	Transmission shaft	
25	HV1500024	2	Bearing bush	
26	HV1500025	2	Ring Seals	
27	HV1500026	8	Screw M10 x 25	
28	HV1500027	16	Lock Washer Φ10	
29	HV1500028	1	Stand bar(a)	
30	HV1500029	1	Stand bar(b)	
31	HV1500030	2	Screw M8 x 15	
32	HV1500200-1	1	Drum Assembly	Used in 15RVSHY
	HV1500200-2	1	Drum Assembly	Used in 18RVSHY
33	HV1500031	1	Coupling I	
34	HV1500032	1	End Bearing	
35	HV1500300	1	Gear Carrier Assembly (Output)	
36	HV1500033	1	Gear-Ring (Output)	
37	HV1500400	1	Gear Carrier Assembly (Input)	
38	HV1500034	1	Circlip for hole Φ125	
39	HV1500035	1	Gear-Ring (Input)	
40	HV1500036	1	Gear—Input Sun	
41	HV1500037	1	Trust Washer	
42	HV1500038	1	Axle sleeve	
43	HV1500039	1	Cover-Gear Housing	
44	HV1500500	1	Clutch Assembly	
45	HV1500040	8	Screw M10 x 35	
46	HV1500041	8	Think Flat Washer Φ10	

47	HV1500600	1	Roller Fairlead	
48	HV1500700-1	1	Cable Assembly	Used in 15RVSHY
	HV1500700-2	1	Cable Assembly	Used in 18RVSHY
49	HV1500800	1	Tensioned Of Steel Wire Supplied Assembly	