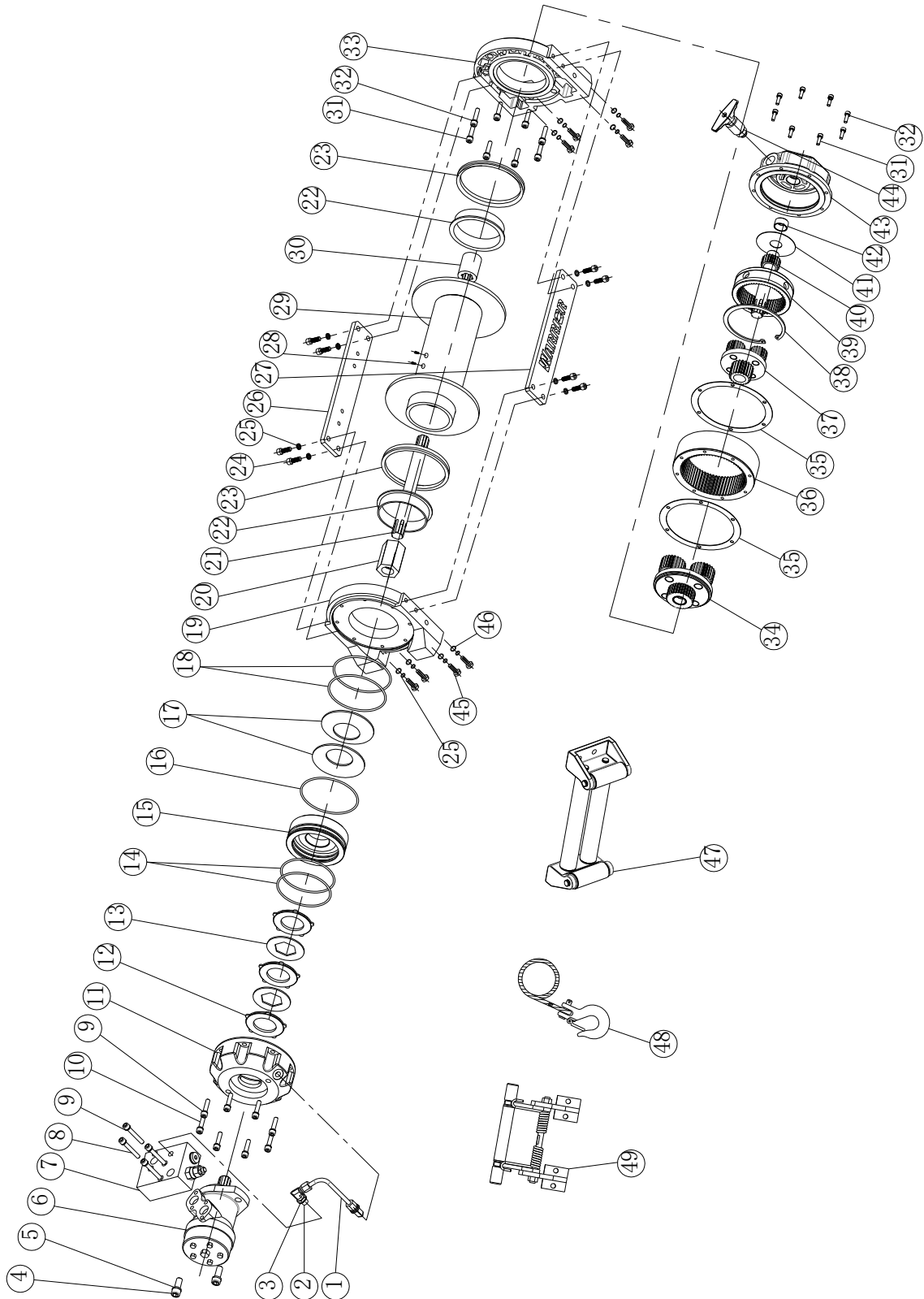




# RV 8000, 8000SD, 10000 Winch Assembly Drawing



## WINCH PARTS LIST (80RVSHY/80RVSDY/10RVSHY)

No.	Part #	Qty	Description	Remark
1	HV1000001	1	High-pressure oil tube	
2	HV1000002	2	Oil connection	
3	HV1000003	2	Combination Washer 14	
4	HV1000004	2	Cap Screw M12 x 30	
5	HV1000005	2	Lock Washer Φ12	
6	HV1000100-1	1	Hydraulic Motor	Used in 80RVSHY 80RVSDY
	HV1000100-2	1	Hydraulic Motor	Used in 10RVSHY
7	HV1000006	1	Blanced valve	
8	HV1000007	4	Cap Screw M8 x 55	
9	HV1000008	12	Lock Washer Φ8	
10	HV1000009	8	Screw M8 x 30	
11	HV1000010	1	Brake stents	
12	HV1000011	3	Brake block	
13	HV1000012	2	Friction plate	
14	HV1000013	2	O-ring seal 100*3.55	
15	HV1000014	1	Piston	
16	HV1000015	1	O-ring seal 140*2.65	
17	HV1000016	2	Disk spring	
18	HV1000017	2	O-ring seal 118*3.55	
19	HV1000018	1	Motor bracket	
20	HV1000019	1	Coupling	
21	HV1000020-1	1	Transmission shaft	Used in 80RVSHY 10RVSHY
	HV1000020-2	1	Transmission shaft	Used in 80RVSDY
22	HV1000021	2	Bearing bush	
23	HV1000022	2	Ring Seals	
24	HV1000023	8	Screw M10 x 25	
25	HV1000024	16	Lock Washer Φ10	
26	HV1000025-1	1	Stand bar (b)	Used in 80RVSHY 10RVSHY
	HV1000025-2	1	Stand bar (b)	Used in 80RVSDY
27	HV1000026-1	1	Stand bar (a)	Used in 80RVSHY 10RVSHY
	HV1000026-2	1	Stand bar (a)	Used in 80RVSDY
28	HV1000027	2	Screw M8 x 15	
29	HV1000200-1	1	Drum Assembly	Used in 80RVSHY 10RVSHY
	HV1000200-2	1	Drum Assembly	Used in 80RVSDY
30	HV1000028	1	Coupling I	
31	HV1000029	16	Cap Screw M6 x 20	
32	HV1000030	16	Lock Washer Φ6	
33	HV1000031	1	End Bearing	
34	HV1000300	1	Gear Carrier Assembly (Output)	
35	HV1000032	2	Gasket	
36	HV1000033	1	Gear-Ring (Output)	
37	HV1000400	1	Gear Carrier Assembly (Input)	
38	HV1000034	1	Circlip for hole Φ125	
39	HV1000035	1	Gear-Ring (Input)	
40	HV1000036	1	Gear—Input Sun	
41	HV1000037	1	Trust Washer	
42	HV1000038	1	Axle sleeve	
43	HV1000039	1	Cover-Gear Housing	
44	HV1000500	1	Clutch Assembly	

45	HV1000040	8	Screw M10 x 35	
46	HV1000041	8	Think Flat Washer $\Phi$ 10	
47	HV1000600-1	1	Roller Fairlead	Used in 80RVSHY 10RVSHY
	HV1000600-2	1	Roller Fairlead	Used in 80RVSDY
48	HV1000700-1	1	Cable Assembly	Used in 80RVSHY 80RVSDY
	HV1000700-2	1	Cable Assembly	Used in 10RVSHY
49	HV1000800-1	1	Tensioned Of Steel Wire Supplied Assembly	Used in 80RVSHY 10RVSHY
	HV1000800-2	1	Tensioned Of Steel Wire Supplied Assembly	Used in 80RVSDY